

Metal Additive Manufacturing Machine

BLT-A160

Small Parts Batch Production Platform



ISO9001:2015 / ISO14001:2015 / ISO45001:2018

The machine has passed
ATEX (Explosion Proof) Assessment

Double Lasers Make
Efficient Production

High-accuracy &
Superior Production

Stable Operation with
Aerospace Quality

Lower Cost for
Machine Maintenance

Mass Production with
Safety Design



Efficient Production
Double beams make
double efficiency



Substrate without Screws
Faster loading
& time saving



**Single-direction Variable
Speed Powder Spreading**
Maximize machine
utilization



**Multiple Safety
Interlocking**
Safety guarantee for
human & machine



Intelligent Software
Real-time monitoring
with traceability

| | |
|----------------------------------|---|
| Supporting Materials | Titanium Alloy, Superalloy, Cobalt Chromium Alloy, Aluminum Alloy, Stainless Steel, High-strength Steel, Tool Steel |
| Build Dimension ⁽¹⁾ | 160mm×160mm×200mm (W × D × H) |
| Laser Power | 500W; 500W×2 |
| Wave Length | 1060nm-1080nm |
| Layer Thickness | 20μm~100μm |
| Maximum Scanning Speed | 7m/s |
| Building Speed ⁽²⁾ | Approx. 15cm ³ /h; Approx. 30cm ³ /h |
| Optics System | F-theta Lens |
| Beam Quality | M ² ≤ 1.1 |
| Recoating | Single-direction Variable-Speed Powder Spreading |
| Minimum Oxygen Content | ≤ 100ppm |
| Gas Requirement | Ar/N ₂ |
| Power Requirement | ≤ 4kW; ≤ 6.5kW |
| Supply Voltage | AC220V 1Ph/N/PE |
| Machine Dimension ⁽³⁾ | 1110mm×910mm×1810mm (W × D × H) Height of Tri-color Indicator: Approx. 380mm |
| Machine Weight | 900kg |
| Software | Magics/Exclusive Data Processing Software for Dentistry; BLT-BP; BLT-MCS; |



*The figure of the machine is only for illustration,
and the product is subject to actual sales.

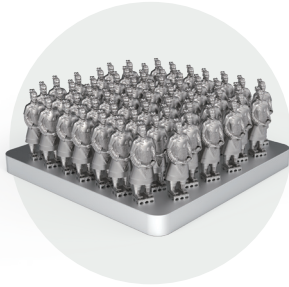
Citations: (1)Excluding substrate thickness. (2)Dependent on part geometry, material and parameter set used.

(3)The dimension does not include the height of tri-color indicator and the height is remarked separately.

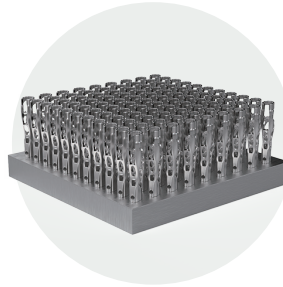
The dimension is only theoretical, the actual data is affected by the configuration, subject to the installation.

*The data is under the condition of BLT, and the data is subject to actual sales.

> BLT-A160 APPLICATION CASES



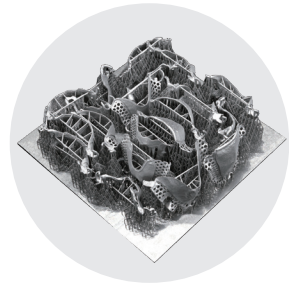
Full-substrate Terra-cotta Warriors
Desktop Ornaments



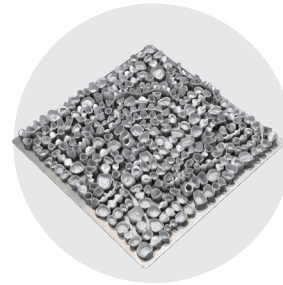
Full-substrate Bottle Opener



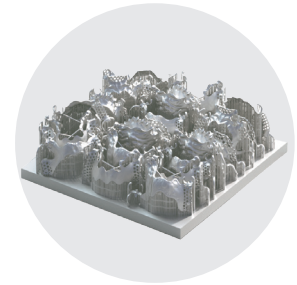
Full-substrate Rollerball Pen



Full-substrate Cobalt
Chromium Alloy Oral Stent



Full-substrate Cobalt Chromium
Alloy Dental Crown



Full-substrate
Titanium Alloy Oral Stent

> BLT-A160 INTELLIGENT MODULES

Standard Functions

Hierarchical Fault Diagnosis/Multiple Safety Interlock Mechanism/Real-time Status Monitoring

Optional Functions

BLT-MCS Connect

> BLT-A160 SUPPORTING CONSUMABLE

Consumable

Recoater/Substrate/Filter Element

Powder

Titanium Alloy, Superalloy, Cobalt Chromium Alloy, Aluminum Alloy,
Stainless Steel, High-strength Steel, Tool Steel